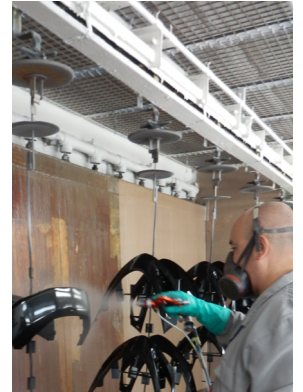




## INDUSTRIAL BODYSHOP

### FINISHES

| CLEARCOAT/ENAMELS             | Nozzle             | Aircap       | Applications   |
|-------------------------------|--------------------|--------------|--|
| SAGOLA X 4100 series SUCTION  | 1.60 / 1.80        | 96 / XT01    | Parts painting, small amounts of paint                                       |
| SAGOLA 3300 GTO SUCTION       | 1.60 / 1.80        | 3300 EPA     |  |
| SAGOLA X 4100 series PRESSURE | 1.00 / 1.20 / 1.40 | 777 / XT01 B | Production, large pieces, complete vehicles and/or high consumption of paint |
| SAGOLA 3300 GTO PRESSURE      | 1.00 / 1.20        | 3300 EPA     |  |
| SAGOLA MINI XTREME PRESSURE   | 1.00 / 1.20        | MINI EPA     |  |
| SAGOLA X 4100 series GRAVITY  | 1.40 / 1.60        | 96 / XT01    | Retouching, lettering and small repairs                                      |
| SAGOLA 3300 GTO GRAVITY       | 1.40 / 1.60        | GTO EVO      |  |
| SAGOLA 3300 GTO CAR GRAVITY   | 1.30 / 1.40        | GTO TECH     |  |
| SAGOLA MINI XTREME GRAVITY    | 1.20               | MINI EPA     |  |



| BASECOATS                     | Nozzle             | Aircap               | Applications   |
|-------------------------------|--------------------|----------------------|--|
| SAGOLA X 4100 series SUCTION  | 1.40 / 1.60        | 96                   | Parts painting and small surfaces. Max. 1 liter of paint     |
|                               | 1.60               | XT01                 |  |
| SAGOLA 3300 GTO SUCTION       | 1.40 / 1.60        | 3300 EPA             | High production, passenger vehicles and any basecoat process |
| SAGOLA X 4100 series PRESSURE | 0.80 / 1.20        | XT03 / XT01 B        |  |
| SAGOLA 3300 GTO PRESSURE      | 1.00 / 1.20        | GTO HVLP / 3300 EPA  |  |
| SAGOLA MINI XTREME PRESSURE   | 0.80 / 1.00 / 1.20 | MINI HVLP / MINI EPA | Small retouches and repairs, several colors                  |
| SAGOLA X 4100 series GRAVITY  | 1.30 / 1.40        | 96 / XT03 / XT01     |  |
| SAGOLA 3300 GTO / GTO CAR     | 1.40               | HVLP / TECH / EPA    |  |
| SAGOLA MINI XTREME GRAVITY    | 1.00 / 1.20        | MINI EPA             |  |

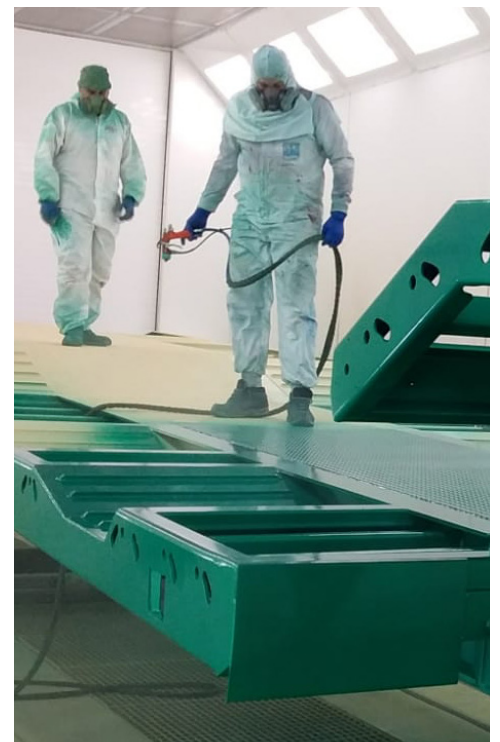


| MIDDLE / HIGH PRODUCTION   | Applications   |
|----------------------------|--|
| SAGOLA 652 INOX / 653 INOX | Applications that do not exceed 25/50L per working day |
| SAGOLA 6110 INOX           | Small pieces or variety of colors                      |

|                              |  |
|------------------------------|--|
| <b>Elcometer P25T / P50T</b> | Applications that do not exceed 25/50L per working day |
| <b>Elcometer P10TS</b>       | Small pieces or variety of colors                      |

| CONTINUOUS PRODUCTION         | Applications  |
|-------------------------------|---|
| SAGOLA DM 1/400 DOUBLE OUTLET | Double simultaneous application in oversized vehicles |
| SAGOLA DM 1/400               | Very high air flow, primers and finishes, abrasives   |
| SAGOLA DM 1/300               | High air flow, light primers and finishes             |

|   |   |
|---|---|
| <b>Elcometer KARA 1-40 DOBLE OUTLET</b> | Double simultaneous application in oversized vehicles |
| <b>Elcometer KARA 1-40</b>              | Very high air flow, primers and finishes, abrasives   |
| <b>Elcometer KARA 1-30</b>              | High air flow, light primers and finishes             |



## INDUSTRIAL BODYSHOP

### PRIMERS

| PRIMER / FILLER               | Nozzle      | Aircap              | Applications  |
|-------------------------------|-------------|---------------------|---|
| SAGOLA X 4100 series SUCTION  | 1.80        | 96 / XT01           | Parts painting, small surfaces                        |
| SAGOLA 3300 GTO SUCTION       | 1.80        | 3300 EPA            |   |
| SAGOLA X 4100 series PRESSURE | 1.40        | 765 / 3030 / XT01 B | High production and large surfaces, complete vehicles |
| SAGOLA 3300 GTO PRESSURE      | 1.40        | GTO HVLP / 3300 EPA |   |
| SAGOLA X 4100 series GRAVITY  | 1.80 / 2.20 | XT03 / 96 / 64S     | Repairs and retouching, small parts                   |
| SAGOLA 3300 GTO GRAVITY       | 1.80        | GTO HVLP / 3300 EPA |   |

| ANTICORROSIVE PRIMER          | Nozzle           | Aircap              | Applications   |
|-------------------------------|------------------|---------------------|--|
| SAGOLA X 4100 series PRESSURE | 1.80 / 1.80 C.T. | XT03 / XT01 B       | Chassis painting and large structures, continuous production |
| SAGOLA 3300 GTO PRESSURE      | 1.80             | GTO HVLP / 3300 EPA |  |
| SAGOLA X 4100 series GRAVITY  | 2.20 / 2.50      | 64S                 | Small parts, retouching and repairs                          |
| SAGOLA 3300 GTO GRAVITY       | 2.20             | 64S                 |  |

| MIDDLE / HIGH PRODUCTION   | Applications   |
|----------------------------|--|
| SAGOLA 652 INOX / 653 INOX | Applications that do not exceed 25/50L per working day |
| SAGOLA 6110 INOX           | Small pieces or several colors                         |

|                              |  |
|------------------------------|--|
| <b>Elcometer P25T / P50T</b> | Applications that do not exceed 25/50L per working day |
| <b>Elcometer P10TS</b>       | Small pieces or several colors                         |

| CONTINUOUS PRODUCTION         | Applications  |
|-------------------------------|---|
| SAGOLA DM 1/400 DOUBLE OUTLET | Double simultaneous application in oversized vehicles |
| SAGOLA DM 1/400               | Very high air flow, primers and finishes, abrasives   |
| SAGOLA DM 1/300               | High air flow, light primers and finishes             |

|  |   |
|--|---|
| <b>Elcometer KARA 1-40 DOUBLE OUTLET</b> | Double simultaneous application in oversized vehicles |
| <b>Elcometer KARA 1-40</b>               | Very high air flow, primers and finishes, abrasives   |
| <b>Elcometer KARA 1-30</b>               | High air flow, light primers and finishes             |

### AIR CONDITIONING

| FINISHES         | Applications  |
|------------------|---|
| SAGOLA 5200 X    | Mechanical filtering, two stage, 8µm + 0,01µm coalescent  |
| SAGOLA 4220 Plus | Mechanical filtering, two stage, 20µm + 0,01µm coalescent |

| PRIMERS         | Applications   |
|-----------------|--|
| SAGOLA 479 Plus | Mechanical filtering (40µm), water condensates and oil |

| CONDITIONING          | Applications   |
|-----------------------|--|
| Pack 6000X Air Heater | Air heating, regularity in the application, winter use |

